

A PLAYSKOOL KINDERGARTEN BLOCK SETS—(3 to 8 yrs.)—Superb hardwood maple blocks, of finest quality to delight the young builder and provide years of pleasure and constructive play. Blocks of natural color, finely sanded and waxed, with edges slightly rounded. Basic unit $1\frac{3}{8} \times 2\frac{3}{4} \times 5\frac{1}{2}$ ", all blocks are a multiple thereof, and large enough to build firm structures. Maximum number of building combinations are provided by an assortment of squares, oblongs, triangles, pillars, arches, half circles, columns, ramps and diagonals.

- 10-10 KINDERGARTEN BLOCKS**—(not illustrated)—20 blocks.
 Ship. wt. 12 lbs. \$5.00
- 10-8 INTERMEDIATE KINDERGARTEN BLOCKS**—(illustrated)—
 42 blocks. Ship. wt. 25 lbs. \$12.50
- 10-12 DELUXE ADVANCED KINDERGARTEN BLOCKS**—(not illus-
 trated)—83 blocks. Ship. wt. 45 lbs. \$25.00

B 9-5 COUNTING HOUSE \$10.00
 (3 to 8 yrs.)—Something New! Consists of the counting house, balance arm, 2 trays, 11 weighted plastic numerals. "1" and "1" on one tray balances "2" on the other, "3" and "2" balances "5", etc. Provides endless hours of enjoyment, teaches recognition of numbers, and encourages an early interest in addition and the difficult problem of subtraction—take "2" from "5" and it is clear to the child that "3" is the remainder, as the trays no longer balance. Measures $16 \times 8\frac{1}{4} \times 12$ " high. Ship. wt. 6 lbs.

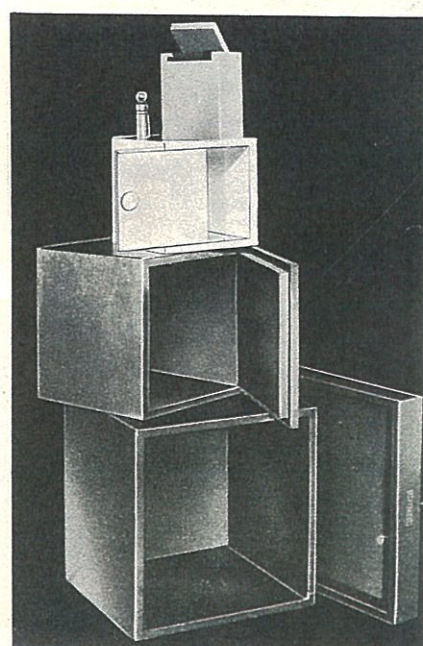
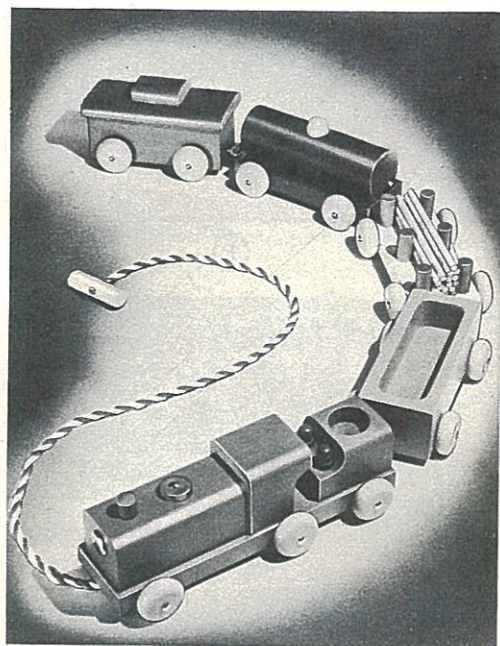
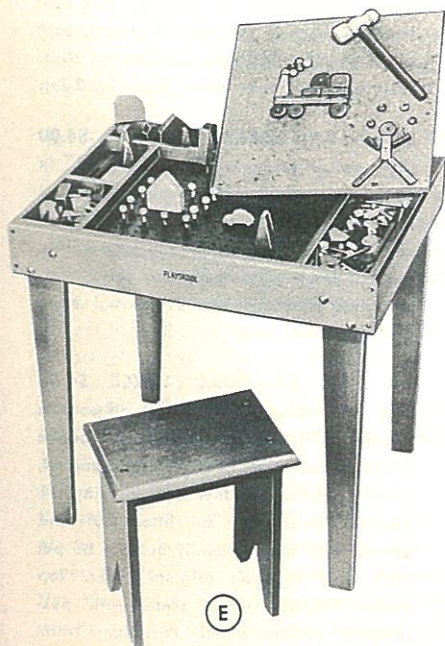
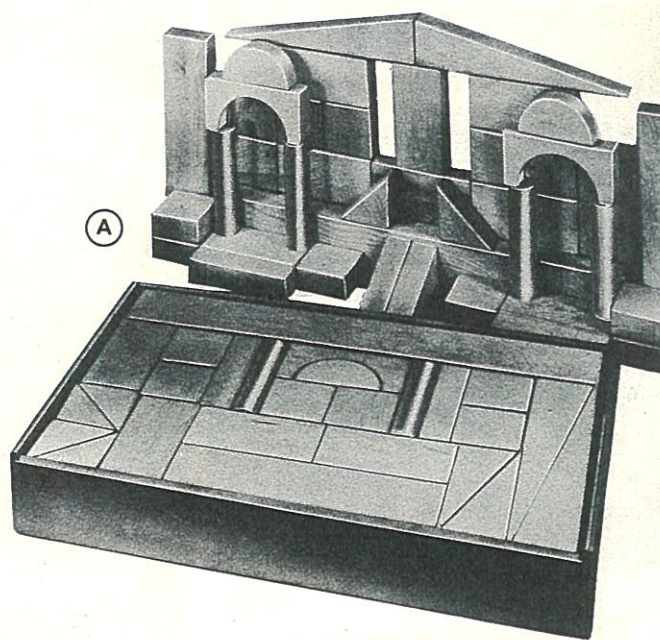
C 10-14 WOOD NESTED BOXES \$10.00
 (2 to 5 yrs.)—They're different! Each box cover opens in a different way (hinge, slide, flush and telescope cover lids). The smallest box is 3" square, the largest 10" square. Brilliantly colored red, green, yellow, blue, these boxes offer fine play in building, stacking, opening, closing, filling, nesting. Ship. wt. 8 lbs.

D 10-18 SUPER FREIGHT TRAIN \$6.00
 (3 to 5 yrs.)—The merry engineer and fireman located in the engine cab can be proud of their 42" long wooden super freight train. It provides everything that the active boy or girl needs for loading, unloading, transporting, switching and freighting. From the real log car to the working caboose, a super fun special. Ship. wt. 6 lbs.

E 27-53 DELUXE HAMMER, NAIL & PEG TABLE \$8.00
 (3 to 8 yrs.)—A sturdy table $20 \times 20 \times 16$ " wide, finished in green with matching bench. An excellent activity toy. There is a generous supply of pegs, which can be fit into holes. composition nailing board, as well as hammer and nails. Booklets give ideas for different patterns to start the child off on a great adventure in experimentation. Ship. wt. 13 lbs.

FOR BABY'S SAKE

basic periods of development of the child, from 3 months to 8 years. We urge parents to follow our selection of these toys in their proper sequence, as they are scientifically grouped to help the child in such important functions as walking, balancing, muscular coordination, color distinction, eye and hand coordination, as well as to stimulate the imagination and give a feeling of accomplishment. Each toy is sturdily constructed, all are colored in non-toxic lacquers in primary and secondary colors.



(E)

(D)

(C)