

No. 6 - 10—Ping Pong Set—An official set to meet the demands of the most exacting player. It consists of 4 full-size 5-ply Ping Pong rackets double-faced with pebbled rubber, 8 official Ping Pong balls, regulation size net with metal ends for reinforcement, adjustable metal springs and tournament posts. Shipping weight 9 lbs. \$10.00

No. 40 - 123—Table Tennis Table—For adults and children. This sturdily built U. S. Army model tennis table is tournament size, 5 x 9' with 5-ply wooden top, giving a fast hard playing surface. Comes in two separate sections, with 8 folding legs and strong metal braces. Sections can be conveniently used for outdoor dining tables. Painted green with white lines. (Rackets, balls and net not included.) Shipping weight 150 lbs. . . . . \$49.50

No. 42 - 6—Double Header Baseball—"Play Ball" and literally that is what is done. Actual pitching and actual batting. One side takes the field, the ball is pitched by rolling it down through a tube onto the playing field and across the plate. The batter swings at it with a wooden bat which is pivoted. If he connects the results are determined by various markings on the field and the ball must come to rest on one of them. All reasonable possibilities have been taken into account to make this a good game with the regular rules of baseball governing the play. Field measures 24" square with 3" wooden sides. Shipping weight 10 lbs. . . . . \$5.00

No. 42 - 18—Commando Game—A fascinating and unpredictable war game played on an enclosed wooden surface 30 1/2" long by 14 1/2" wide. The Commando, in this case, a wooden top, goes spinning away from its home base towards important objectives in enemy territory, ricocheting along the surface as it goes knocking over pins that represent these objectives which are a flying field, factory, radio station, gun emplacement, etc. The game is scored by points and the more important the objective, the higher the score, and 200 points for the top enemy "Brass Hats" which is, of course, the prize capture. Shipping weight 10 lbs. . . . . \$5.00

No. 42 - 45—Large Kikit—This spirited game of soccer played right at home by 2 players. Plenty of action with the game won usually by the more agile and deft player. The playing field is inside an open box measuring 40 x 24". Above and across the field are stationary rods which can be rotated and from which are suspended the kickers to hit the ball with. Each player has the same number of rods, one using the red rods, the other the white ones. The ball is kicked off from the center of the field and immediately the player's hands fly over the rods to keep the ball racing up and down the field until finally a goal is scored. And so on until the game is won. Shipping weight 20 lbs. . . . . \$12.95

No. 42 - 43—Small Kikit—Same as above only that the playing field is inside an open box measuring 30 1/2 x 14 1/2". Shipping weight 8 lbs. . . . . \$6.00

No. 10 - 45—Defense of the Atlantic—Ship sunk by submarine—Fleets move into action—base established at Dakar or elsewhere, as the case may be. Mine fields laid as the fight for the control of the Atlantic begins. It is a game of skill for 2 to 4 players on a 17 x 21" folding board with coastal areas in green and ocean in red and white checks. The metal naval ships of all types for both sides are moved around checker fashion—no dice to throw, no arrow to spin—skill prevails. Shipping weight 4 lbs. . . . . \$2.00

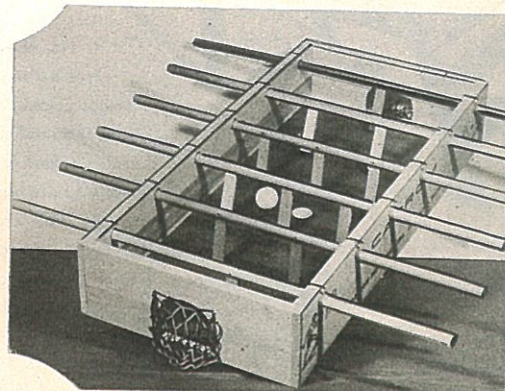
No. 10 - 44—Defense of the Pacific—Same as above but played in the Pacific. Shipping weight 4 lbs. . . . . \$2.00



Ping Pong Set



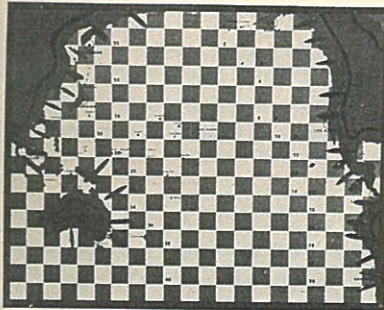
Double Header Baseball



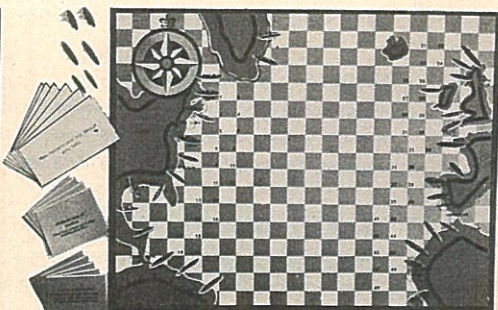
No. 42-43—Small Kikit



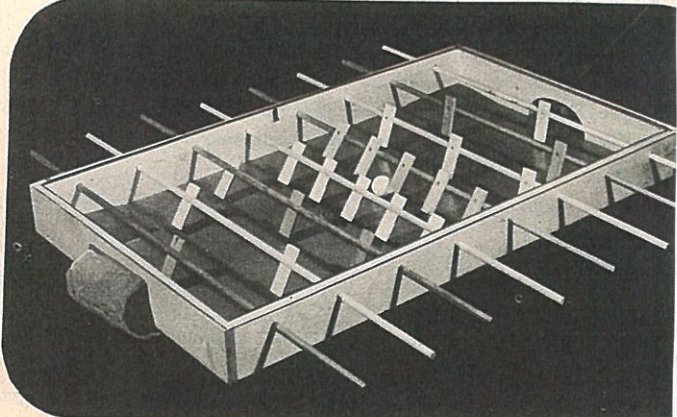
Commando Game



No. 10-44—Defense of the Pacific

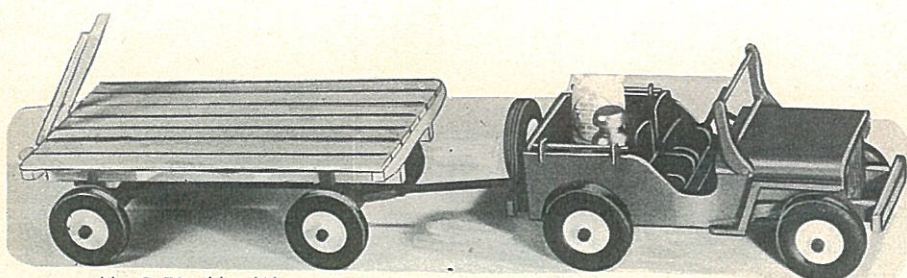


No. 10-45—Defense of the Atlantic



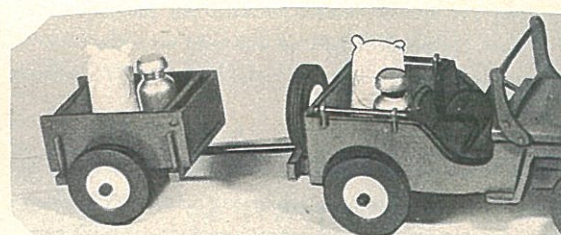
No. 42-45—Large Kikit





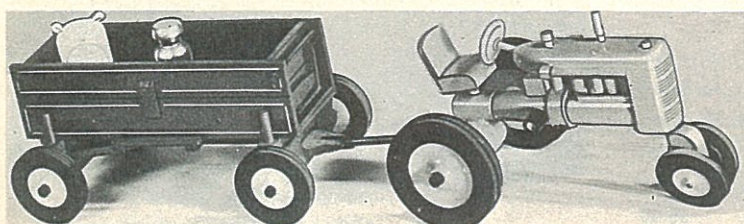
No. 9-76—Hay Wagon

No. 9-80—Farm Jeep



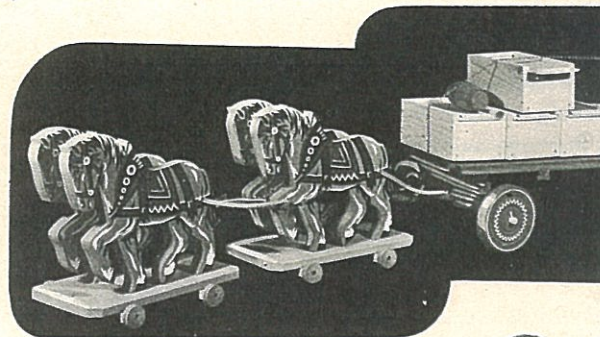
No. 9-74—Trailer

No. 9-80—Farm Jeep

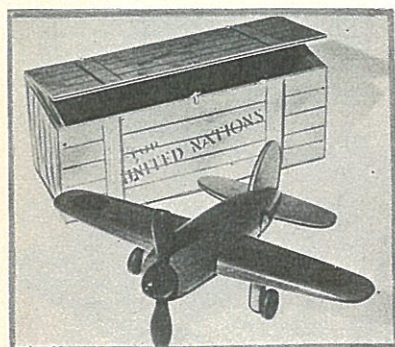


No. 9-78—Farm Wagon

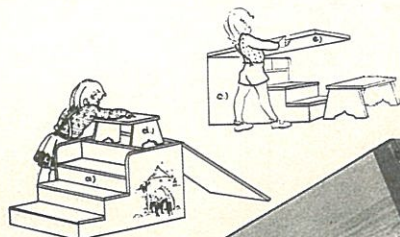
No. 9-79—Tractor



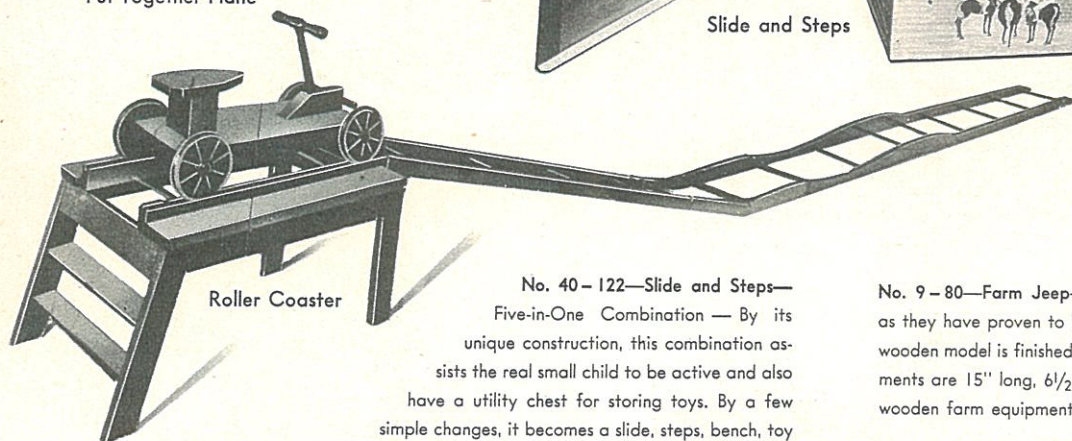
Double Team with Loaded Truck



Put Together Plane



Slide and Steps



Roller Coaster

No. 40-122—Slide and Steps—

Five-in-One Combination — By its unique construction, this combination assists the real small child to be active and also have a utility chest for storing toys. By a few simple changes, it becomes a slide, steps, bench, toy chest or play table. Well constructed of wood with a natural glossy finish and an attractive design on the side in five bright colors. When closed as a table, it measures 29" long, 20 1/4" wide and 17" high. Shipping weight 30 lbs. . . . \$30.00

#### BINGO THE BRONCO

The only difference in these three horses listed below is the name which is imprinted in small white letters on the back of the saddle. They are large measuring 24" from saddle to floor and 38" long. Each is made with an almost round body of composition board with wooden tail, head and legs. Their bodies are covered with a red cotton horse blanket and have leatherette bridles and saddles. The distance from saddle to stirrups is adjustable from 13 to 20". Their legs are hinged at the body enabling the rider by his posting or action in the saddle to make the horse move slowly forward and the horse's feet are padded to prevent injury to floors as the rider improves his technique. Shipping weight 33 lbs. each.

No. 40-101—Bingo the Bronco . . . . .	\$26.25
No. 40-104—Peggy the Pinto . . . . .	26.25
No. 40-105—Midnite the Mountie . . . . .	26.25

No. 40-241—Roller Coaster—Just as the name implies, it's a miniature coaster for in- or out-of-door use at home. The small wooden car starts with its occupant from a raised platform 23" high, and runs down to the ground over a grooved wooden track 19' long. For an extra thrill the track has a slight hump in it. Shipping weight 82 lbs. . . . \$29.95

No. 9-80—Farm Jeep—Down on the farm you will see many jeeps in use after as they have proven to be very useful for all jobs over the most difficult terrain. The wooden model is finished in a combination of maroon, yellow and black and the components are 15" long, 6 1/2" wide and 6 1/2" high. It can be used to haul any of the wooden farm equipment as listed below. Shipping weight 5 lbs. . . . .

No. 9-76—Hay Wagon—Overall measurements are 15 3/4" long, 9" wide, 5 1/2" finish rack, maroon chassis, black and yellow wheels. Shipping weight 4 lbs. . . . .

No. 9-78—Farm Wagon—Overall measurements are 14 1/2" long, 7 1/2" wide, painted green with yellow trim, maroon chassis, black and yellow wheels. Contains 3 1/2" milk cans, painted silver, and three 4" feed bags. Shipping weight 5 lbs. . . . .

No. 9-79—Tractor—Overall measurements are 13 1/2" long, 8 1/2" wide, 8" high, with black wheels. Shipping weight 4 lbs. . . . .

No. 9-74—Trailer—Overall measurements are 6 1/4" long, 6 1/2" wide, 4 1/2" high, green, wheels black and yellow. Shipping weight 3 lbs. . . . .

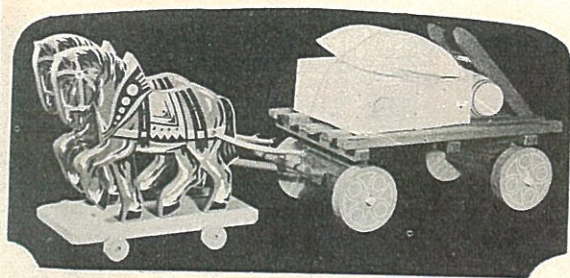
No. 11-85—Put Together Plane—The small youngster will delight in receiving a wooden case with hinge cover marked for the "United Nations," especially when he finds a sturdy wooden airplane in lacquer finish that can be readily put together and it measures 11 1/2 x 8 3/4". Shipping weight 3 lbs. . . . .

No. 40-73—Double Team with Loaded Truck—"Pile 'em on boys" this 4-horse team. These strong dray horses pull a colorful truck, piled high with four wooden cases, filling, two barrels, and a cement bag. Strong leather traces hitch the horses to the heavy looking chain binds the load for safe delivery. Length overall 42". Shipping weight 10 lbs. . . . .



Bingo the

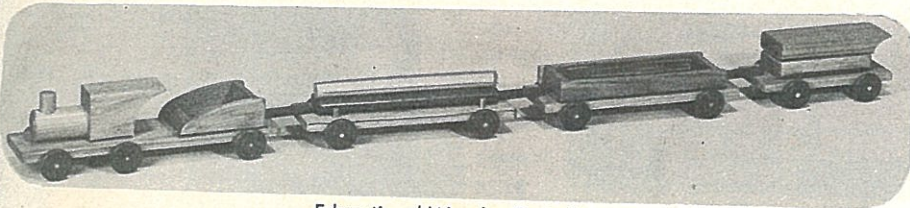




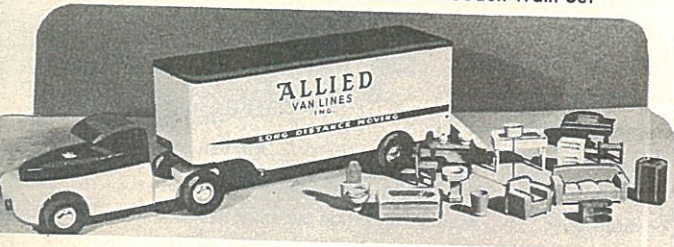
Team with Loaded Truck



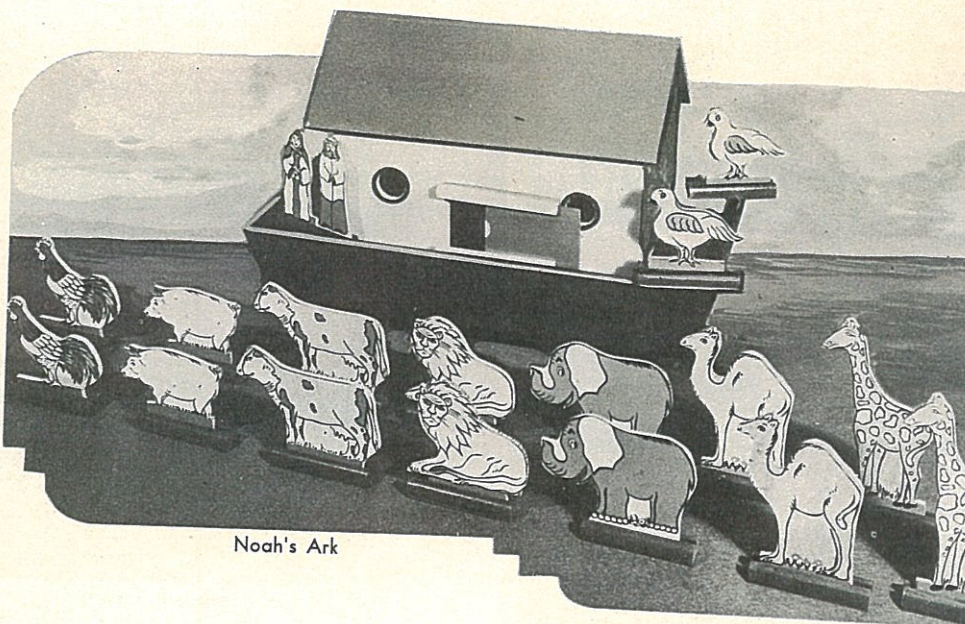
Circus Wagon



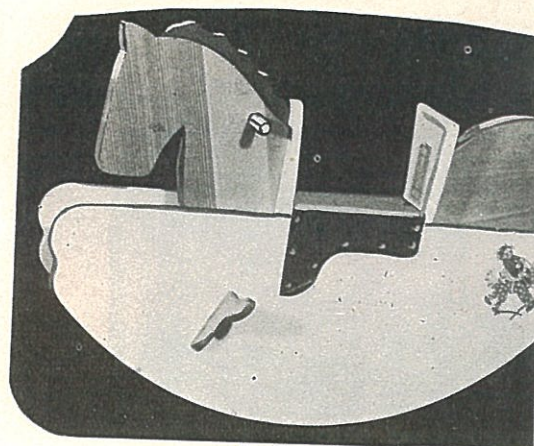
Educational Wooden Train Set



"Cross Country" Moving Van



Noah's Ark



Rocking Horse

No. 11-74—Educational Wooden Train Set—The very young engineer will have the time of his life pushing and pulling this 42" all wooden train. The set may be used together as a train or separately, and in addition, the engine and caboose have the take-apart educational feature. The well-constructed open-body work car, lumber car with 3 bright colored logs, caboose and engine are made of selected kiln-dried oak with lacquer finish, solid red wooden wheels and quick-action coupling device for each car. Shipping weight 6 lbs.

\$6.00

No. 40-10—"Cross Country" Moving Van—An Allied Moving Van filled with furniture, for long distance moving. The sturdy all wooden Van can be opened in the rear for loading and unloading the furniture while the tractor and trailer have automatic lock-on device with special front rest bar holding the trailer when not at-

tached. It is 31" long by 7½" wide by 8" high and beautifully finished in orange, yellow and black with realistic treads on the heavy duty wheels. Shipping weight 10 lbs.

\$8.95

No. 40-117—Noah's Ark—This colorful wooden ark is 20" long and 12" high and painted with a striking effect of red, yellow and green. The roof lifts off, exposing 8 pairs of animals on stands, Noah and his wife. The 18 figures averaging 5" in height are made of strong and durable 3-ply wood attractively painted. Shipping weight 8 lbs. . . . . \$10.95

No. 40-118—Circus Wagon—To perpetuate the thrill of the circus parade! Four white prancing horses with painted on circus harness pull the sturdy red and blue wagon with a clown in the driver's seat. The wagon contains 8 favorite circus animals in wood painted in lively

colors and mounted on wheels. The horses and measure 38" overall, while the two teams of horses be unhitched for better play. Shipping weight

No. 40-39—Rocking Horse—This gallant char made of selected wood and constructed so strong it will stand up under the roughest of treatment. Equipped with 47" curved rockers so that it will not wobble. Painted white with stenciled design and a wide seat 18" from the floor with back support covered in blue leatherette. The mane, tail, and stirrups of natural wood. Shipping weight 42 lbs. . . . . \$

No. 40-62—Team with Loaded Truck—Same as No. 40-10 but larger truck only this is drawn by a 2-horse team. Has 2 wooden cases that open for filling, 1 barrel and a cement bag. Length overall 27". Shipping weight 8 lbs. . . . .

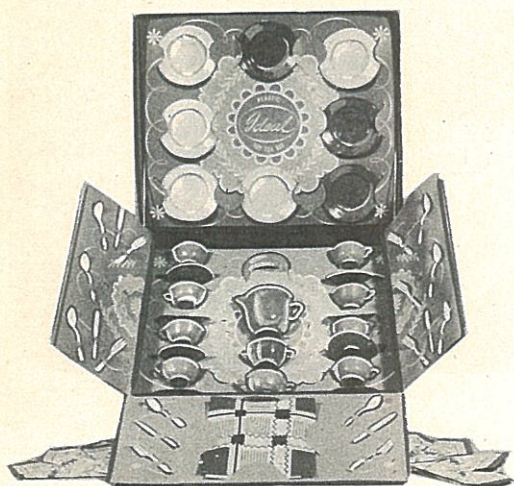




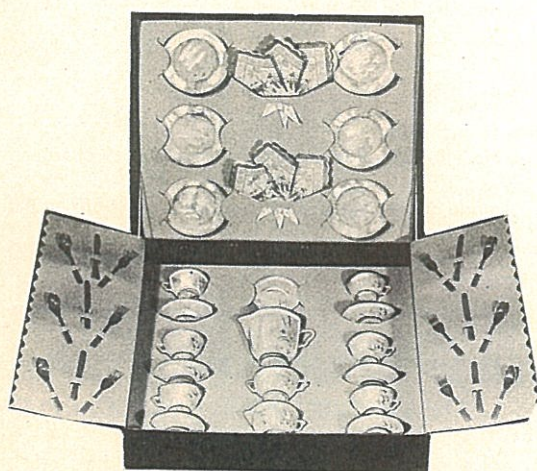
No. 4-16—Plastic Tea Set



No. 6-39—Tea and Baking Set



No. 10-8—Plastic Tea Set



No. 6-17—Plastic Tea Set



Plastic Telephone



Luncheon Basket

**No. 4-16—Plastic Tea Set**—The "little hostess" will enjoy serving tea to her friends with this colorful tea set with service for 4 including plates, saucers, cups, tea pot, sugar and creamer, knives, forks and spoons. Each piece is made of durable plastic free from tarnish and discoloration. Box 17 x 15 x 3 1/4. Shipping weight 4 lbs. . . . . \$2.25

**No. 6-39—Tea and Baking Set**—The little hostess will be well equipped to serve her guests with this combination tea and baking set. The tea service consisting of four cups and saucers, four 4" plates, covered sugar and creamer, is made of glass in a color combination of blue, white, and green; while the baking set consists of mixing bowl, 5" covered bowl, 4 dessert dishes, wooden rolling pin, egg beater and wooden masher. Shipping weight 10 lbs. . . . \$2.25

**No. 44-1—Tea Wagon**—Just as dainty and pretty as the "Little Hostess" herself, who should be mighty proud to serve from such a lovely tea cart. Made of fine wood and wicker, painted a delicate blue; it runs so smoothly too on the solid wheels. A complete tea service for four is included—cups, saucers, cake plates, sugar bowl creamer, and tea pot—finished in ivory with flower design and red trim—also 4 knives, forks and spoons, paper doilies and a decorated rose-filled vase. Size overall 27 x 21 x 12". Shipping weight 25 lbs. . . . . \$21.95

**No. 11-3—Luncheon Basket**—A real delight to the exacting "little hostess." This handsome, natural wicker basket is full of dainty things to set the prettiest and most appetizing luncheon table imaginable. The 16 x 9 1/2 x 5 1/2" basket with carrying handle contains a 15-piece plastic tea set for 4, a 24" square gay colored cloth, 4 napkins, 4 each of glasses, knives, forks and spoons. Shipping weight 7 lbs. . . . . \$9.50

**No. 5-69—Kitchen Stove**—A stove made of non-essential material yet it has all the eye and play appeal one could desire in a toy stove that does not heat. While the various gadgets are printed on, it does have 2 oven



Tea Wagon



Kitchen Stove

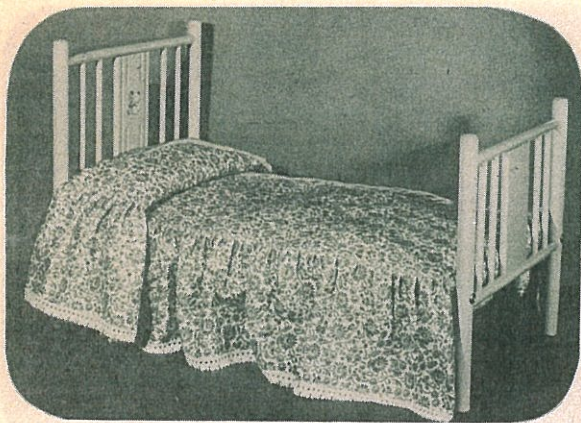
drawers that slide out smoothly. The utensils, an attractive unit, include whistling tea pan, bowl, and 2 hanging pieces. With trim and measuring 15 3/4 x 14 x 7". Shipping weight 2 lbs. . . . .

**No. 6-17—Plastic Tea Set**—An ideal for a young hostess consisting of 6 plates, 6 cups, 6 saucers, tea pot, sugar bowl, creamer, and 6 knives, forks and spoons made entirely of brightly-colored plastic. Attractively boxed, 17 x 15 x 4 1/2". Shipping weight 6 lbs. . . . .

**No. 10-8—Plastic Tea Set**—Every child hostess. This 50-piece set, complete with carrying case, comes in a combination of gay colors, including 4" plates, eight cups and saucers, covered sugar bowl, creamer, and 6 knives, forks and spoons, paper napkins and table cloth. Attractively boxed. Shipping weight 6 lbs. . . . .

**No. 11-47—Plastic Telephone**—"Hello Santa Claus? Well, this is me, and I want to talk to you." That plastic telephone in Schwarz's catalog is beautifully made of plastic with red numbers on the dial which clicks as it dials. It has a coiled cord, and it measures 3 1/2 x 5 x 3" high. Shipping weight 2 lbs. . . . .

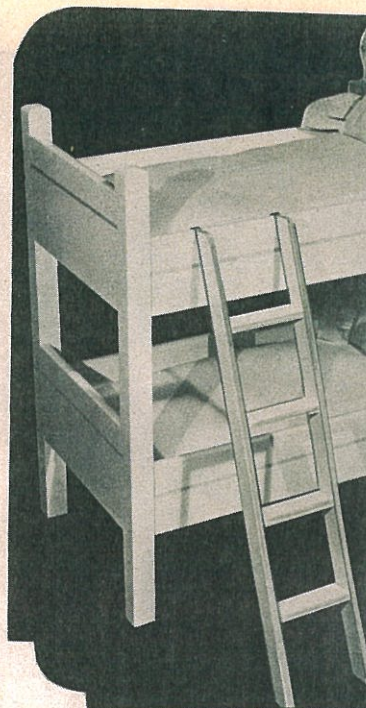




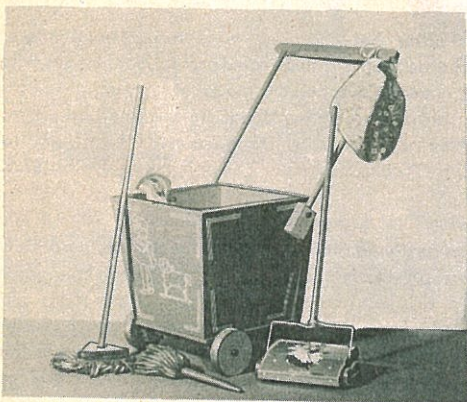
No. 40-47—Doll Bed



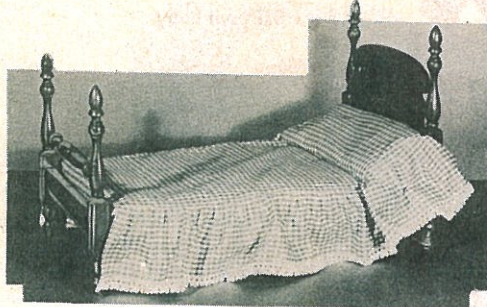
No. 27-76—Double Decker Doll Bed



No. 40-1—Double Decker Doll Bed



Housekeeping Cart



No. 27-1—Colonial Trimmed Bed

**No. 27-75—Doll Bed**—A sturdy, four-poster wooden bed finished in blue enamel stenciled with an attractive design of a pair of dressed up bears on the head and footboards. It is 20" long by 11" wide and is fitted with mattress, 1 sheet and blue flowered spread edged with lace with pillow to match. PINK or BLUE. STATE COLOR. Shipping weight 7 lbs. . . . . \$7.25

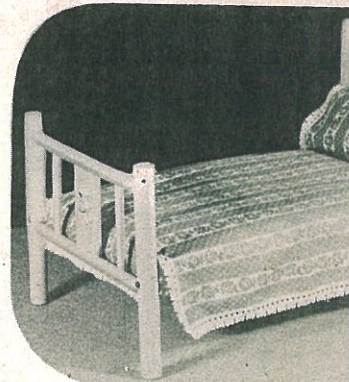
**No. 40-47—Doll Bed**—Same as above, but 24" long, 15" wide. PINK or BLUE. STATE COLOR. Shipping weight 9 lbs. . . . . \$12.95

**No. 27-76—Double Decker Doll Bed**—This congenial arrangement for dolls appeals greatly to children who too would enjoy sleeping this way. It is made of wood, finished in light PINK or BLUE enamel and each bed is attractively fitted with mattress, sheet, printed spread edged with pleated pink silk, and matching bolster. It is 20" long, 18" high and 11 1/2" wide. STATE COLOR. Shipping weight 9 lbs. . . . . \$10.75

**No. 40-1—Double Decker Doll Bed**—This sleeping arrangement for dolls appeals to the many children who sleep this way, as well as those who would like to. The beds are 24" long, 13 1/2" wide and 26" high. They are exceptionally well-built of wood and painted a flat white with pink and blue trim. Each bed has a soft mattress and pillow covered with a pink spread and matching material for the pillows. Shipping weight 22 lbs. \$18.95



Doll High Chair



No. 27-75—Doll Bed

**No. 40-127—Housekeeping Cart**—No running back and forth for the missing dust tool. They are and can always be in the cart, and the cart can be easily rolled to the job. The cart is made entirely of wood, painted blue and red with suitable decorations in white. Its body is 11" square, 10" deep and contains a floor mop, hand mop, carpet sweeper, dust cloth and a very attractive apron. Shipping weight 10 lbs. . . . . \$5.75

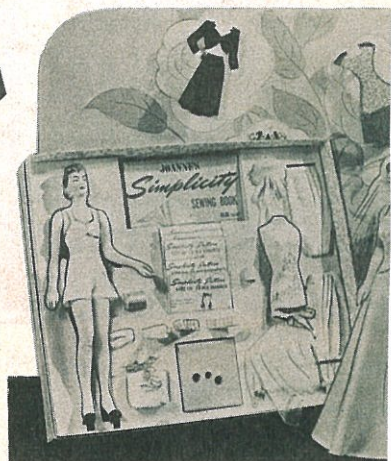
**No. 27-74—Doll High Chair**—Every doll, as every "little mother" knows should have a high chair, and this strong wooden chair, 28" high, beautifully upholstered in a striking combination of colored leatherette will make things much more complete for the attentive "little mother." The liftable tray measures 12 x 4 1/2". Shipping weight 8 lbs. . . . . \$5.00

**No. 9-33—Dressmaking Set**—A 12" composition mannequin modern-looking and a perfect subject for fitting, patterns and material for 3 dresses, wooden dress form and an 88-page sewing book with 600 illustrations comprises this outfit specially created to satisfy a girl's desire to design and

fashion clothes. Box measures 14 x 13 x 2 1/2". Shipping weight 5 lbs. . . . . \$3.00

**No. 6-15—Bride Dressmaking Set**—This combination has a real practical value. It tends to encourage the art of sewing by taking the natural desire of Girls for clothes and doing something about it. It includes an attractive 15" teen age composition figure as a model. Besides the figure are materials for making 2 dresses for this figure as well as a complete bridal costume of white satin with a veil. Other materials can be utilized for other dresses and original designs since there is a comprehensive 88-page book on sewing with 600 illustrations and details. All the sewing accessories such as thread, thimble, tape, etc., are included. Shipping weight 7 lbs. . . . . \$7.50

**No. 27-1—Colonial Trimmed Bed**—This four-poster Colonial type bed has much appeal because it is a true copy. Strongly built of wood, finished in maple stain, measures 10 3/4 x 11 x 19 3/4" long, and is complete with mattress, pillow, sheet, pillow case, blanket and an attractive red gingham bedspread with lace edging. Shipping weight 7 lbs. . . . . \$7.00



No. 6-15—Bride Dressmaking Set



No. 9-33—Dressmaking Set





Hatmaker Set



Greta



Snowsuit Baby



Nurse Trousseau

No. 5-66—**Hatmaker Set**—Fashions have a perfect for Girls and since designing is the basis of all fashion need. It includes a small Chappelliere model of a you on which to cut, drape and originate hat styles in the sional manner. Also included are 4 hat patterns, cust 4 hats, crochet cotton and booklet "Hints for Young Designers." Shipping weight



Babykin Trousseau



Deb-U-Doll

Monica Doll—This modern-looking doll, was designed and created for the expressing to a young Girl a mature and rather sophisticated doll. Her hair, real human right out of her head and can be combed, brushed and curled into many small beautifully made clothes snap on and off and have a definite appeal to the girl conscious and who would like to try out her own ideas on designing and dress-making practical way. The slenderized, composition body has movable head, arms and features and flesh-colored surface besides evident poise and charm.

No. 11-52—**Greta**—Dressed in a figured chambray full skirt with bolero, white organdy blouse with short puff sleeves, lace trimmed slip, panties and felt shoes; a sprig of flowers in her hair add a shade more of loveliness to her 20 inch statelin weight 6 lbs.



Little Sister Trousseau

No. 6-45—**Nurse Trousseau**—The patient is sure to show improvement with this sweet little nurse in attendance. She is 11 inch tall, with jointed composition body, moveable head with painted features and mohair wig. Besides the white uniform, cap, panties, stockings and shoes she wears, there are 2 dresses; one of jersey—the other organdy, also a blue cape with red lining, brushed wool coat and hat, nightgown and robe—all in a good-looking suitcase type 4 x 8 1/2 x 13 1/2 inch box. Shipping weight 4 lbs. \$11.75

No. 11-11—**Deb-U-Doll**—This modern-looking doll has proven to be so popular that we are again featuring her. She has a very definite appeal to the older girl who is beginning to be clothes conscious and who can try out her own ideas about what the best dressed young lady should wear, adding to her knowledge of designing and dressmaking. This 20 inch doll is made of rubber with a flesh-colored surface, removable arms, painted features and finger nails, and a stylish coiffure. Her slenderized body can be adjusted to model various outfits very effectively. An extra change is included. Dressed in blue plaid skirt with yellow sweater and plaid hat to match. For the afternoon she has a smart-looking wine crepe dress. Shipping weight 5 lbs. \$5.00

No. 10-49—**Snowsuit Baby**—This baby doll with flirting eyes is dressed for "snow" in a woolly-like snowsuit with collar, white rompers tied by ribbon, white patent leather slippers. Her soft stuffed body is tall with durable composition head and ping weight 7 lbs.

No. 10-95—**Little Sister Trousseau**—Like "son Girls" these sisters have both charm and will bring much joy and happiness to some lucky child. The older sister 15 inch younger 11 inch tall are exquisitely dressed in billowy mousseline de soire dresses. Each has a bouquet of pink June roses with matching dress. Their bodies are jointed, with movable sleeping eyes and mohair wigs. The snap 20 x 12 1/2 x 6 inch contains matching trousseau doll consisting of two dresses, pajama robe and two pairs of panties. Shipping



Plassie Trousseau

No. 9-86—**Plassie Trousseau**—Every girl loves Plassie. She is a dream come true! Stronger and prettier than you'd ever baby doll could be. Her curved baby arms are of sturdy composition, her body is and her molded plastic head tilts and twinkling glassine eyes with long lashes and voice makes her seem almost real. She wears pair of pink rompers with matching socks and shoes. To complete her wardrobe a beautiful pink silk coat and bonnet, white dress and slip, white bonnet, flannelett and white panties. Attractively boxed 14 Shipping weight 7 lbs.

No. 10-75—**Babykin Trousseau**—An adorable 11 inch baby doll with jointed composition body, lovely eyes that close, and a wig made of washable lamb's wool. She wears a long white dress trimmed with pink, slip, bonnet, diaper, socks and white kid shoes; while her other clothes such as coat, hat, pajama outfit, dress, bonnet, slip, panties, extra diaper, face cloth and towel are neatly arranged in a handsome snaplock suitcase 14 1/2 x 9 1/2 x 4 inch. Shipping weight 6 lbs. \$21.75





Bridesmaid Doll

No. 9-89—Bridesmaid Doll—"Always a bridesmaid, but never a bride!" This will never happen to this young Miss because of her exceptional charm and beauty. She is 18" tall, and wears a lovely pink billowy dress and carries a bouquet of pink June roses with matching headdress. She has a jointed composition body, with movable head, sleeping eyes and mohair wig. Shipping weight 3 lbs. . . . . \$11.95

No. 9-91—Same but 15" tall. Shipping weight 3 lbs. \$7.50

No. 9-87—Skating Doll—Dressed for the occasion in a blue whip-cord outfit with full skirt and fancy gold braid trimming studded with small colored beads and a matching blue ribbon in her hair. Her legs are appropriately bare. Her white shoes have skates attached. She measures 14" tall, has composition body with jointed neck, shoulders and hips, and eyes with lashes that close. Shipping weight 3 lbs. . . . . \$7.50



Skating Doll



Pinky Baby



Pinky Baby with Coat

No. 10-16—Pinky Baby with Coat—She cries and she goes to sleep too just like a real baby. She is 19" tall, her movable head, chubby arms, and legs are made of composition and her body is stuffed with soft cotton. The hair is molded and painted on head. She is dressed in mousseline de soire with silk slip and panties, white baby shoes and rayon socks. Her exquisite coat and bonnet are made of pique with white braid trimmings. Shipping weight 3 lbs. \$11.45

No. 10-15—Same but 17" tall. Shipping weight 3 lbs. . . . . \$8.95

No. 10-50—Pinky Baby—Same as above only she wears a beautiful net dress and bonnet. Shipping weight 3 lbs. . . \$8.95

No. 10-14—Same but 17" tall. Shipping weight 3 lbs. . . . . \$6.95

No. 9-88—Baby Doll in Christening Dress—Like most babies, not only the best dressed but very daintily and all in white except for many pink ribbons. She measures 18" tall, has a soft body which contains a Mama voice, composition head, hands and feet. Her sleeping eyes have real lashes. She wears a long white net dress with a white lace insert down the front and across the shoulders. It is also edged with lace while the bonnet is all lace of a matching design. (Pillow not included.) Shipping weight 3 lbs. . . . . \$15.00

No. 10-39—Large Baby Doll—This captivating young Miss with that "baby stare" in her eyes and engaging voice yearns to be someone's baby. She deserves it too, because a Stylish Miss she is! She wears a printed organdy dress with lace edging and matching bonnet, white slip and panties, socks and shoes. She is 22" tall, has composition head, arms and legs,

painted hair and soft stuffed body. Shipping weight 4 lbs. . . . . \$9.95

No. 9-48—Little Genius Doll with Wig—Beauty is her principal charm and as lovely as any doll you are likely to see. She is 22" tall with a soft stuffed body and movable composition head, arms and legs; beautiful sleeping eyes and curly mohair wig. She looks very sweet in her white mousseline de soire dress and matching bonnet, white slip, panties, socks and shoes with pompoms. Shipping weight 4 lbs. \$12.95

No. 9-25—Same but 20" tall. Shipping weight 4 lbs. . . . . \$9.95

No. 9-11—Same but 17" tall. Shipping weight 3 lbs. . . . . \$6.95

No. 10-32—Doll with Magnetic Hands—She is a wonderful and more realistic companion because she can hold her own toys by means of a permanent magnet concealed inside each hand. She is most attractive and the 20" jointed, composition body with movable head, sleeping eyes and curly mohair wig is dressed in a blue cotton twill pinafore with organdy shirt waist, white slip, panties, shoes, and socks. Her magnetic toys consist of note pad, knitting, ice-cream cone and artist's brush. Shipping weight 5 lbs. . . \$12.95

No. 9-47—Girl Doll in Organdy Dress—Any little girl would be proud and happy to have this beautiful doll for her constant companion. She is 20" tall and her jointed composition body with movable head, sleeping eyes and curly mohair wig. She wears an organdy dress with matching bonnet, pink slip and panties, white shoes and socks. Her hat and dress are trimmed with very attractive for-get-me-nots. Shipping weight 4 lbs. . . . . \$11.95

No. 9-46—Same but 16" tall. Shipping weight 3 lbs. . . . . \$8.95



Girl Doll in Organdy Dress



Doll with Magnetic Hands



Large Baby Doll



Little Genius Doll





Little Lady Bride with Trousseau



Little Lady in Evening Dress



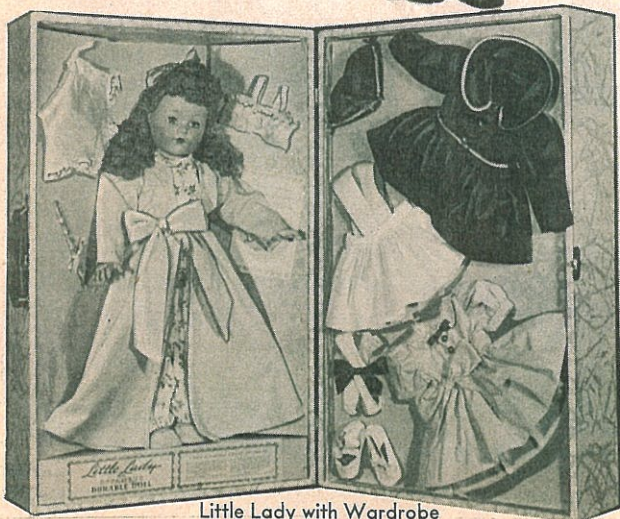
Little Lady Bride



Little Lady in Party Dress



Little Lady with Coat



Little Lady with Wardrobe

**Effanbee Little Lady Dolls**—These "Little Lady Dolls" besides having the exclusive new-type hair that can be curled and styled, have the satin-smooth complexion of dolls are noted, sleeping eyes with real eye lashes, and in addition are dressed in the latest Fifth Avenue styles. All 15 inch dolls will be shipped with mohair wig.

**No. 11-69—Little Lady Bride with Trousseau**—This 18" young Lady with her trousseau, all packed neatly in a handsome carrying case, leaves little to be desired. She wears a white rayon-satin bridal gown with long sweeping train, white rayon slip and panties, white slippers and opera length stockings, a long white net bridal veil with tiny white beads on the crown. As extra clothing, she has evening gown of plaid rayon skirt with white blouse and sash with large bow and streamers, bow for hair matches sash, long ruffle-trimmed petticoat,

white, flowered marquisette nightgown with flowered rayon negligee to match, lace trimmed panties and bra, evening slippers, bouquet for bridal gown, necklace, comb and booklet on care and styling of hair. Shipping weight 7 lbs. . . . \$27.75

**No. 11-71**—Same but 15" doll with mohair wig. Shipping weight 10 lbs. . . . \$15.75

**Little Lady Bride**—She is dressed in white rayon-satin bridal gown with long sweeping train, white rayon slip and panties, white sandal-strap slippers and opera length stockings. Her long white net bridal veil is set on a satin-rayon crown with a design of tiny white beads. She carries on a lace doily an old fashioned bouquet of lilies-of-the-valley with white ribbon streamers.

**No. 9-19—Little Bride Doll**—21" tall. Shipping weight 5 lbs. . . . \$14.95

**No. 9-21—Little Bride Doll**—18" tall. Shipping weight 4 lbs. . . . \$10.95

**No. 11-1—Little Bride Doll**—With mohair wig. 15" tall. Shipping weight 3 lbs. . . . \$7.95

**Little Lady in Evening Dress**—This young lady is most becomingly dressed in a rayon-taffeta evening gown, beautifully styled with shirred flounce skirt. Velvet bows trim the flounce and waistline, while a matching cluster of velvet bows adorn her lovely hair. She wears a rayon slip and panties, stockings and sandal-strap evening slippers. Pink, blue, maize. STATE COLOR.

**No. 10-26—Lady in Evening Dress**—21" tall. Shipping weight 5 lbs. . . . \$15.95

**No. 10-12—Lady in Evening Dress**—18" tall. Shipping weight 4 lbs. . . . \$11.25

**No. 10-72—Lady in Evening Dress**—With mohair wig. 15" tall. Shipping weight 3 lbs. . . . \$8.00

**Little Lady in Party Dress**—This time very smart short marquisette party dress with trimming, rayon slip and panties, slip socks. A ribbon bow adorns her hair, don't forget, can be styled, cut. With a booklet to show you how. F. maize. STATE COLOR.

**No. 10-4—Lady in Party Dress**—21" tall. Shipping weight 5 lbs. . . . \$15.95

**No. 9-7—Lady in Party Dress**—18" tall. Shipping weight 4 lbs. . . . \$10.95

**No. 10-71—Lady in Party Dress**—15" tall. Shipping weight 3 lbs. . . . \$7.95

**Little Lady with Coat**—Dressed in white twill Princess Coat and Dutchie hat with hat trimmed in royal blue. Underneath wears a darling blue and white checked guimpe with white broadcloth blouse, ties to match dress, black slippers and white socks.

**No. 9-97—Lady with Coat**—21" tall. Shipping weight 5 lbs. . . . \$15.95

**No. 11-18—Lady with Coat**—18" tall. Shipping weight 4 lbs. . . . \$10.95

**No. 11-17—Lady with Coat**—With mohair wig. 15" tall. Shipping weight 3 lbs. . . . \$7.95

**No. 10-89—Little Lady with Wardrobe**—This 18" doll comes with a delightfully complete wardrobe all fitted neatly in a carrying case. She is dressed in a two-piece pajama suit with blue twill house coat and ribbon bow in her hair. In the case are a royal blue twill coat with beanie with colored braid, a red and white checked dress, a white pinafore, apron, a lace with lace trimmed panties to match, white socks, ribbon bow for hair, a comb for her special hair and booklet on styling of her unusual hair. Shipping weight 11 lbs. . . . \$27.75

**No. 10-88**—Same but with 15" doll wig. Shipping weight 10 lbs. . . . \$15.75

ALL ITEMS IN  
AT OUR BRAIN

ARDMORE, PA  
St. Georges R





Sweetie Pie in Play Pen with Layette

**Sweetie Pie Babies**—These dolls make precious playmates and can be cuddled and loved just like a real baby. Each has large expressive eyes with real eye lashes to close tight for go-to-sleep time. All are strongly made in the best Effanbee manner with satin-smooth complexion. All are dressed in becoming clothes in the best Fifth Avenue taste.

**No. 40 - 110—Sweetie Pie in Play Pen with Layette**—All-composition doll with go-to-sleep flirting eyes and tousle wig that you will love to brush and comb. Dressed in pink gingham creeper with white shoes and socks. Measures 22" tall. She has her own little play-pen, made of pink wood, with blue wooden movable beads on two sides of the pen to play with. And there's a printed quilted pad for the floor of the play pen. And her darling layette: printed dotted swiss dress, trimmed with organdy embroidered edging with bonnet to match, combination undie-sunsuit, flannel pajamas, jersey-rayon shirt, flannel wash-cloth, soap, celluloid rattle and warm blanket. Shipping weight 19 lbs. . \$35.00

**Sweetie Pie with Tousle Wig**—You'll simply adore this huggable baby in this outfit. Dusty-pink twill dress-up coat with black velvet peter-pan collar and three little pink and black buttons. Dusty pink twill poke bonnet with black velvet trimming. And under her coat, Sweetie Pie wears a darling little spun-rayon dress with panties to match. White shoes and socks complete this adorable outfit. Her Tousle Wig can be combed and brushed like a baby's. And you'll be captivated by her eyes which can go to sleep and roll from side to side.

**No. 10 - 34—Sweetie Pie**—19" tall. Shipping weight 5 lbs. \$15.95

**No. 10 - 46—Sweetie Pie**—18" tall. Shipping weight 4 lbs. \$12.95



Sweetie Pie with Tousle Wig

**Sweetie Pie with Tousle Wig and Flirting Eyes**—You'll find this doll irresistibly attired in her pink rayon-silk dress with crisp white striped marquisette pinafore; she wears panties to match her dress, and her pink rayon-silk poke bonnet with facing and ruffle to match her pinafore frames her sweet face perfectly. White shoes and socks complete her outfit. Her Tousle Wig is an exclusive feature—made of lambskin. It can be brushed and combed and curled into little ringlets.

**No. 9 - 96—Sweetie Pie**—24" tall. Shipping weight 6 lbs. \$15.50

**No. 11 - 19—Sweetie Pie**—19" tall. Shipping weight 5 lbs. 12.95

**No. 9 - 38—Sweetie Pie**—18" tall. Shipping weight 4 lbs. 10.00

**No. 9 - 10—Sweetie Pie Toddler With Tousle Wig**—Sturdy, toddler-age doll with an all-composition body that has that smooth-skin complexion, this Toddler can stand on her own chubby little legs. She comes dressed in a short print spun-rayon suspender-effect dress, and white blouse; panties to match dress, matching poke bonnet, Rick-rack trimming on dress and bonnet, white shoes and socks. It's fun to brush and comb her Tousle Wig, and curl it into little ringlets. After an active day, Toddler will be glad to close her lovely eyes and go to sleep. She is 20" tall. Shipping weight 6 lbs. . . . . \$12.95

**Sweetie Pie With Painted Hair**—A cuddly doll dressed in printed spun-rayon guimpe with white blouse, with panties to match dress. Matching poke bonnet trimmed with net ruching; white shoes and white socks.

**No. 9 - 94—Sweetie Pie**—24" tall with flirting eyes. Shipping weight 6 lbs. . . . . \$10.95

**No. 9 - 95—Sweetie Pie**—19" tall with sleeping eyes. Shipping weight 5 lbs. \$7.95

**No. 9 - 37—Sweetie Pie**—18" tall with sleeping eyes. Shipping weight 4 lbs. . . . . \$6.95

**No. 9 - 99—Sweetie Pie with Layette**—This Sweetie Pie baby has an all-composition body, beautifully formed, 20" tall and bright, sparkling, flirting eyes that can go to sleep. She has painted hair. In a large, attractive carrying case, dolly is dressed in combination undie-sunsuit, wrapped in blanket and tied with large ribbon bow. And she has a lovely layette consisting of: Blue twill coat with bonnet to match, white batiste dress trimmed with pink and blue wool braid, lawn slip, flannel pajamas, jersey-rayon shirt, pink ribbon bow. Shipping weight 9 lbs. . . . . \$21.95



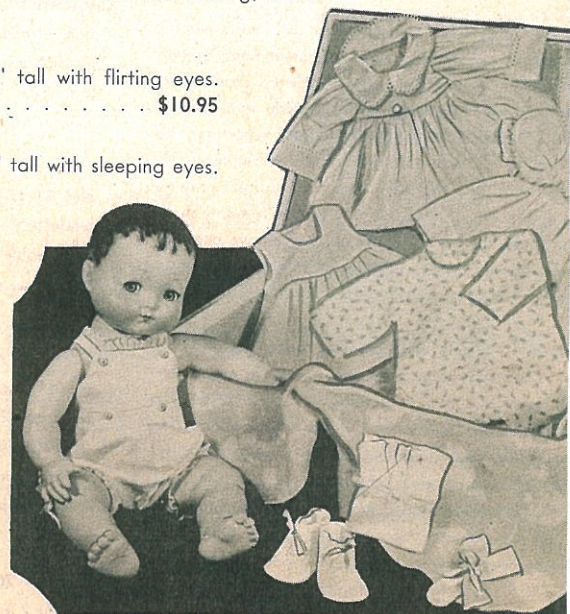
Sweetie Pie with Wig and Flirting Eyes



Sweetie Pie Toddler with Wig and Flirting Eyes



Sweetie Pie with Painted Hair



Sweetie Pie with Layette

FIGURE ARE ALSO ON DISPLAY  
WE INVITE YOUR INSPECTION

BOSTON 16, MASS.  
40 Newbury Street

745 FIFTH AVENUE at 58<sup>TH</sup> STREET