

**A 11-19 JR. PLASTIC ENGINEER .....\$3.95**

(8 yrs. up)—Who knows what great discovery will be made 50 years hence by someone who first became fascinated with plastics "way back in 1948"? This set contains all necessary raw materials for basic processes now used in the industry. By extrusion, filler moulding, etc., many objects in clear, opaque and colored plastics can be made for play or decorative purposes. Box measures: 15x11". Instructions. Ship. wt. 4 lbs.

**B 42-8 PLASTICOR .....\$19.95**

(9 yrs. up)—The fastest-growing industry in the land—plastics—provides this fine plastic moulding machine for youngsters to make their own plastic toys. Operation is simple and interesting. The five moulds provided make five different toys. Extra plastic and moulds can be supplied. Ship. wt. 23 lbs. Additional Moulds .....Ea. **\$1.50** Additional Plastic pkg. of 8 ounces \$ .90

**C 10-44 TECH CONSTRUCTION SET .....\$3.95**

(7 yrs. up)—Made entirely of dimensional plastic parts, brilliantly colored, this set is ideal for early technical training. Method of dowel-assembly is easy since no nuts or bolts are used. This set can construct 150 possible models (one at a time) as windwills, locomotive, cannon, sewing machine, horse and wagon, etc. Ship. wt. 6 lbs.

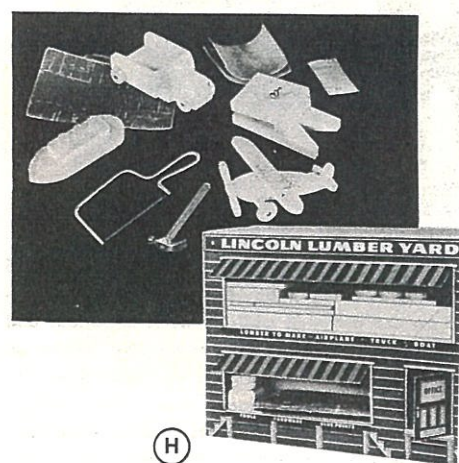
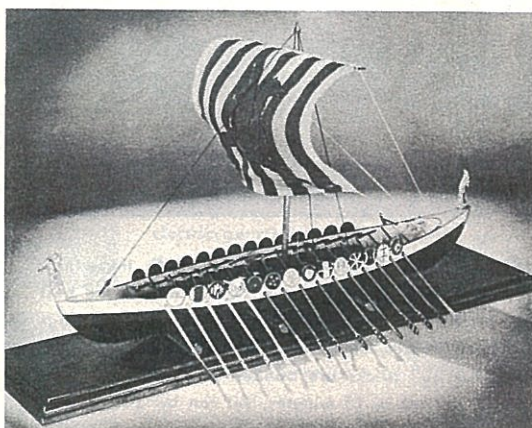
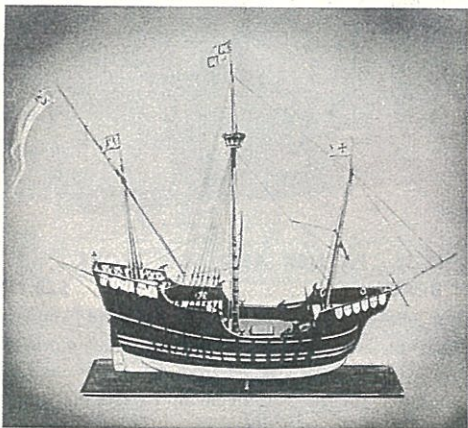
**D 4-36 DUPLEX TELEPHONES .....\$6.95**

Popular two-way phones giving smooth reception. Signal buzzer, two phones, 100 feet of wire included. 4 dry cell batteries needed (see below). Ship. wt. 6 lbs.

**E 42-11 HOBBYCRAFT POWER TOOLS .....\$30.00**

(12 yrs. up)—A full 8½ ft. of steel machine tool power, this equipment is ideal for turning out new household gadgets, repair jobs near professional efficiency. Circular Saw, Jig Saw, Spindle Shaper, Joiner, Drill Press, Disc Sander, all necessary pulleys, line shaft beltting. Platform not included (1/10 H.F. motor, not included, sufficient for operating one tool at a time.) Ship. wt. 35 lbs.

**4-37 Set of 4 Batteries. Ship. wt. 8 lbs.....\$3.00**



(F)

(G)

(H)

**SHIP CONSTRUCTION SETS**—When completed, these scale model reproductions add an interesting and decorative touch in the home. They will cause children to ask questions about them and so learn of the romantic histories behind each of these models.

**F 4-5 SANTA MARIA .....\$15.00**

A scale model (5/32" to 1") of the famous ship "Santa Maria" used by Columbus in discovering America during the 15th Century. Has fully shaped wooden hull, masts, and spars ready for final sanding. Balance of equipment includes every tiny gadget, even to the flags, to complete the ship in every detail. Hull measures 11½" long. Ship. wt. 4 lbs.

**G 4-7 VIKING SHIP .....\$9.00**

This type ship was used by the Pirate Northmen who roved the seas plundering the coast of Europe in the 8th to 10th Centuries. Set consists of fully shaped wooden hull, masts and spars ready for final sanding plus the numerous tiny gadgets needed to complete this (3/16" to 1") scale model. The hull measures 14" long. Ship. wt. 4 lbs.

**H 10-9 LINCOLN LUMBER YARD .....\$5.00**

(6 to 12 yrs.)—From lumber yard to toy! First fold 11 x 16" heavy and perforated cardboard box into intended form of lumber yard building, then saw away the good lumber. Next, select which of 3 toys to make first steamship, truck or airplane and then by the use of the tools: nails, sandpaper, vise, hammer and scroll saw and by following clear blueprints, cut along the printed guide line the lumber. Finally sand, fit and nail together finished 7½" product. Ship. wt. 5 lbs.