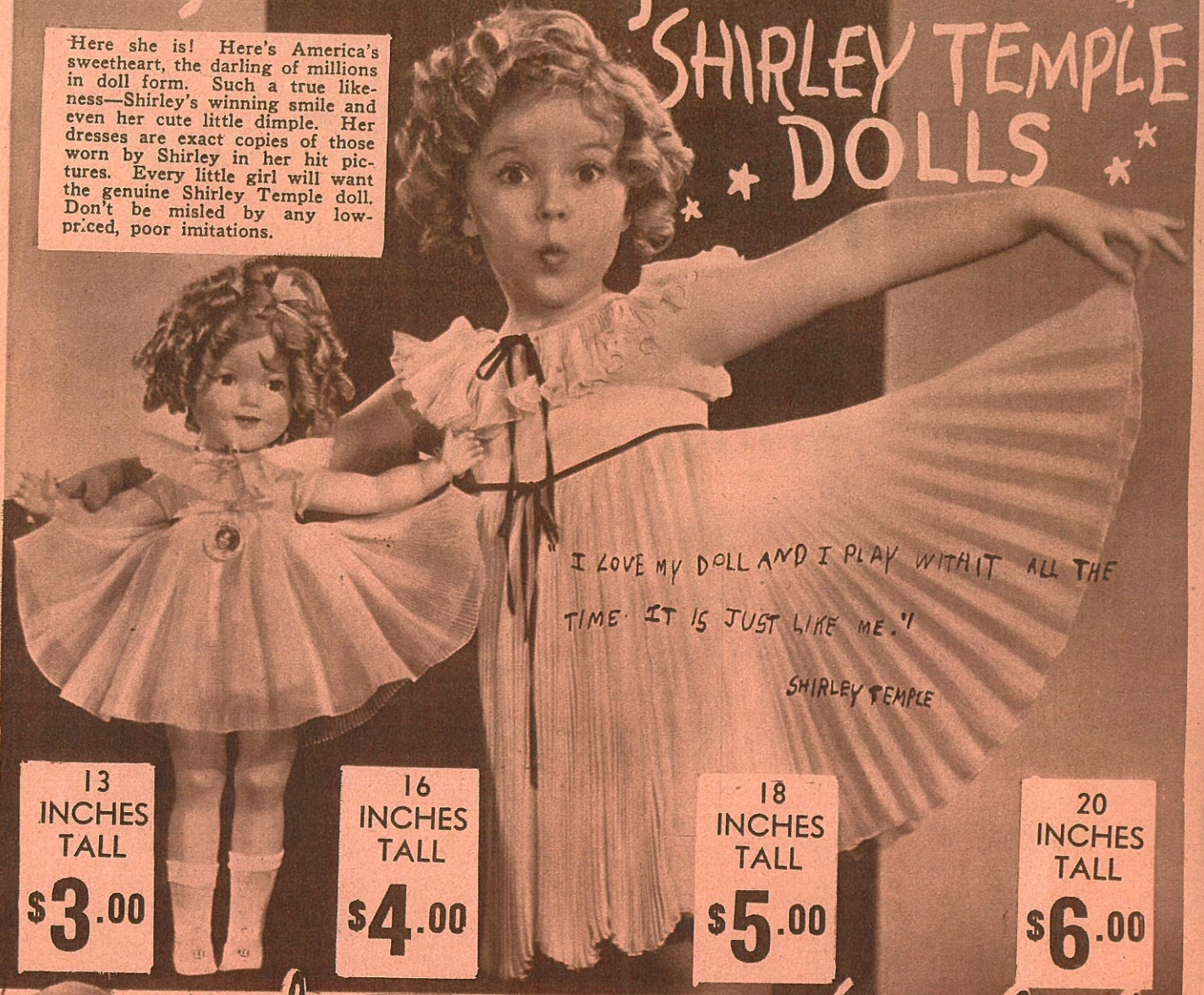


Original and Genuine... SHIRLEY TEMPLE DOLLS

Here she is! Here's America's sweetheart, the darling of millions in doll form. Such a true likeness—Shirley's winning smile and even her cute little dimple. Her dresses are exact copies of those worn by Shirley in her hit pictures. Every little girl will want the genuine Shirley Temple doll. Don't be misled by any low-priced, poor imitations.



I LOVE MY DOLL AND I PLAY WITH IT ALL THE TIME. IT IS JUST LIKE ME.!

SHIRLEY TEMPLE

13
INCHES
TALL
\$3.00

16
INCHES
TALL
\$4.00

18
INCHES
TALL
\$5.00

20
INCHES
TALL
\$6.00



Girls - You can make a lovely dress for your dolly from the

RUTH DOLL DRESS PATTERN

RUTH
Box 333, PHILA., PA.
I enclose 10 cents for which send me postpaid a set of Ruth Doll Dress Patterns. I want to make my dolly some new dresses.

Name

Street and No.

City and State

Would you like to cut out and make a pretty dress, a pair of bloomers and a big sunbonnet hat for your best doll? Just fill in and clip the coupon at left and send with 10c in coin and Ruth will send you a complete set of patterns for a 12-inch doll.

