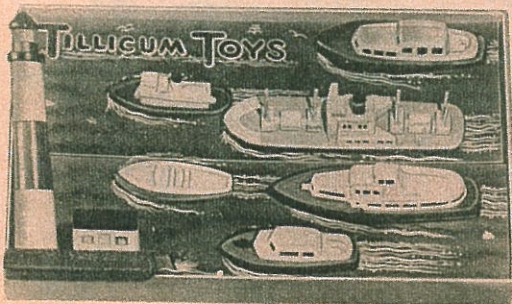


MODEL SHIPS (Exclusive Import) — Perfect water line models of these world famous, luxurious ships with interesting detail. Carved in wood, painted by hand, their decks, life boats, bridge, stacks, etc. are painstakingly made. Ship. wt. 1 lb. each.

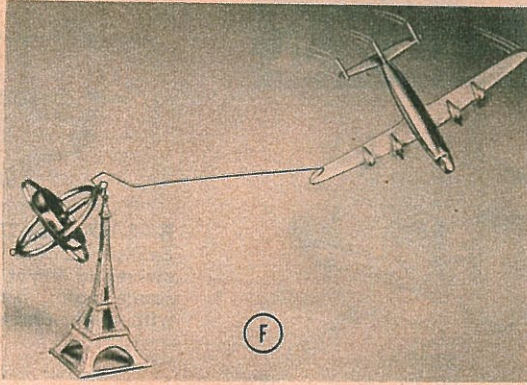
- | | | | | | |
|----------|--------|----------------------------|----------|-------|----------------|
| A | 31-508 | S. S. UNITED STATES | 9" long | | \$13.50 |
| B | 31-503 | LIBERTE | 8½" long | | \$13.50 |
| C | 31-501 | QUEEN MARY | 9¼" long | | \$13.50 |
| D | 31-502 | QUEEN ELIZABETH | 9½" long | | \$13.50 |
| E | 31-635 | CORONIA | 8½" long | | \$12.00 |



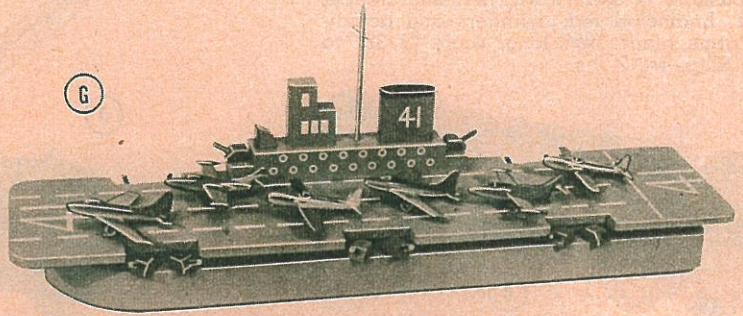
H 3-57 TILLICUM OCEAN TRAVEL SET .. \$5.00
Float them in tub or tank, push them along the floor. "Very young captains" take real delight commanding this impressive fleet. They're 6 boats of modern design (largest 9", smallest 4") with wooden hulls and white plastic superstructure and an 8" colorful lighthouse. Wt. 3 lbs.



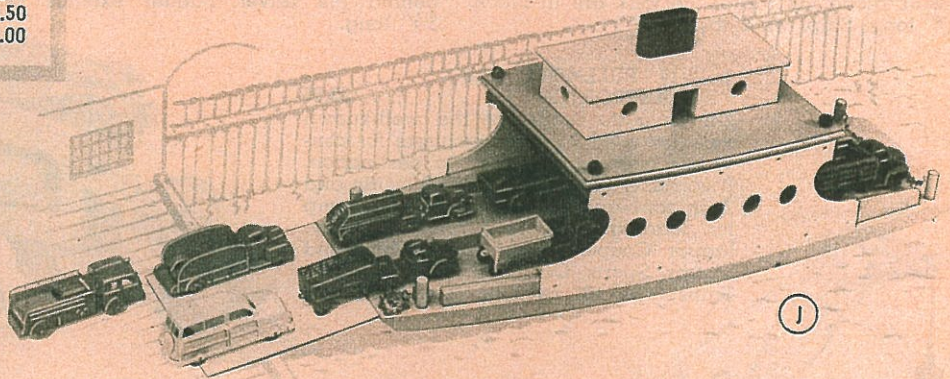
K 18-145 MECHANICAL LAKE BOAT \$4.50
(4 yrs. up)—Every line of this boat is familiar to the excursionist, frequently seen on lakes and inland water ways. It has 3 brown metal decks with bridge on the top deck. Gleaming white plastic hull 11" long. Spring motor driven. Ship. wt. 3 lbs. (Imported).



F 18-266 AERO GYRO-SCOPE (Imported).... \$5.95
(All ages)—With the top attached to one end of the stiff wire and the airplane to the other, the spinning of the top will balance and propel the two as they revolve around the spire of the Eiffel Tower. Tower measures 5¾" high, top 2¼" in diameter. The top can be used separately in order to enjoy its full wizardry. Ship. wt. 2 lbs.



G 10-12 AIRCRAFT CARRIER WITH AIRPLANES (Exclusive) (3 to 6 yrs.) \$7.50
The hull is wood and to it is screwed the overhanging natural wooden 26" deck, giving this ship strength. She can be shoved and pulled, knocked and abused, and still be fit for service. The deck is roomy, allowing the six airplanes to maneuver freely. Ship. wt. 8 lbs.



J 11-30 FERRY BOAT WITH TRUCKS (Exclusive)..... \$10.00
(3 to 6 yrs.)—It's such fun to own and operate a ferry boat, collecting fares for automobiles and passengers. This sturdy model ferry boat is mounted on small wooden rollers for easy floor navigation. Solid wooden hull with plywood superstructure is painted grey with red and white trim and measures 22" overall. A cargo of 8 small plastic trucks are included but not the ramp. Ship. wt. 7 lbs.



L 4-71 MECHANICAL YACHT (Imported)..... \$12.95
(4 yrs. up)—Any young sea captain would be proud of this beautiful luxury passenger liner. Her well made, well designed metal hull, 20" long, fairly glistens with spotless white paint and blue trim. She's fast too! Powered by a strong, long running spring motor. Four life boats swing on davits. Ship. wt. 4 lbs.

M 4-61 MECHANICAL OIL TANKER (Imported)..... \$12.95
(4 yrs. up)—The skipper of this fast, trim looking ocean-going oil tanker winds up the vessel's excellent spring motor and she is ready for a long voyage. All metal with baked enamel finish in red, black, white and green. Two life boats swing on davits and pennants fly from her mastheads. Hull 20" long. Ship. wt. 4 lbs.